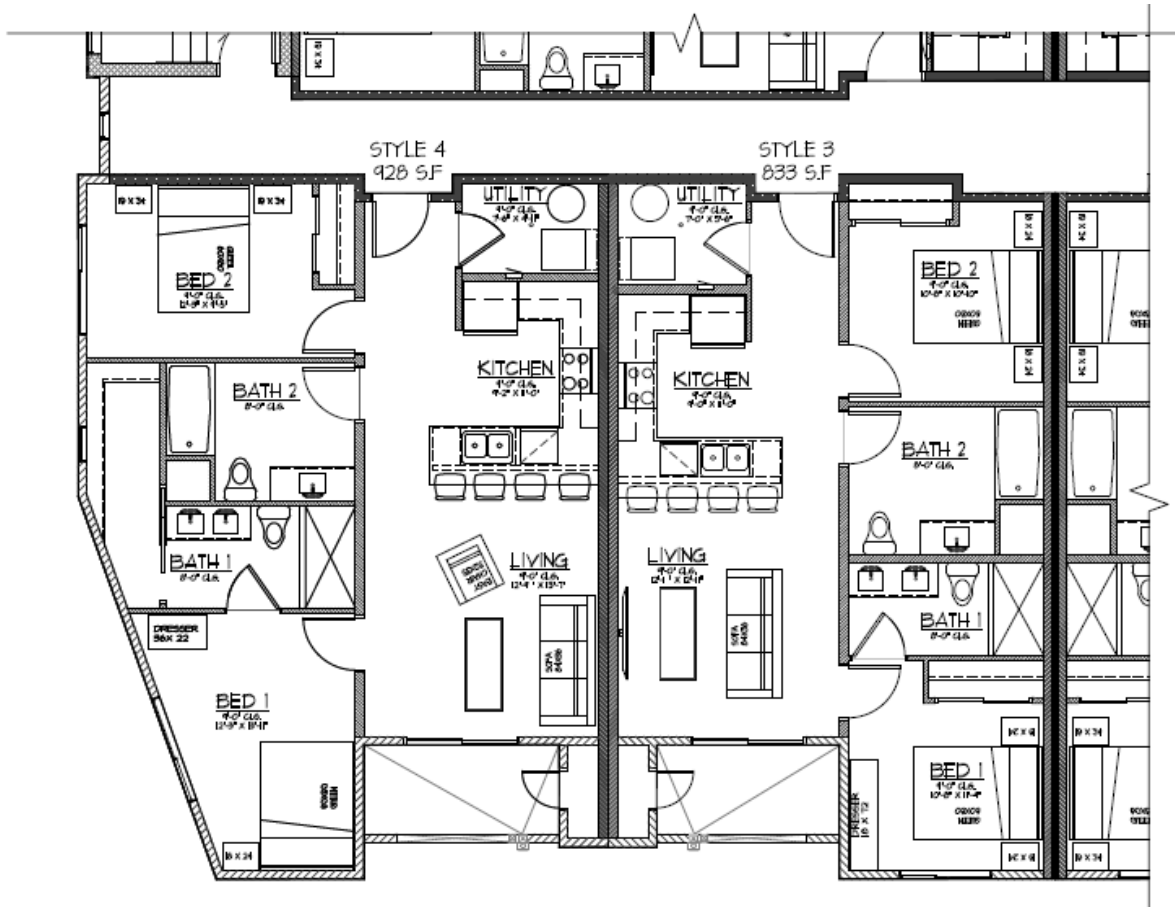




**FLOOR PLAN Styles 3 & 4**

Style 3, Type B. Typical Units: 206, 306, 406 and 506 and *mirrored units* 204, 304, 404 and 504.

Style 4, Type B. Typical Units: 201, 301, 401, 501



**IMPORTANT:**

All information contained herein deemed reliable as the source is the project architect. However none of the information contained herein shall be considered guaranteed or warrantable due to discrepancies from the plans to field based construction.